



# LED Controller

## Specifications



Before you use the LED controller, please read this file first and save it for future

We will struggle and serve for the booming development of LED industry!

# BX-Y1

# CATALOG

Characteristics.....	5
Guiding.....	6
Safety Notes.....	6
Control area.....	7
Support high refresh.....	7
Multiple communication mode.....	7
Multiple communication mode.....	8
Large storage capacity.....	8
Abundant 3D stunt.....	8
Support database.....	9
Support Android app.....	9
Flexible program release methods.....	9
Technical specifications.....	11
Dimension diagram.....	12
Interface diagram.....	13

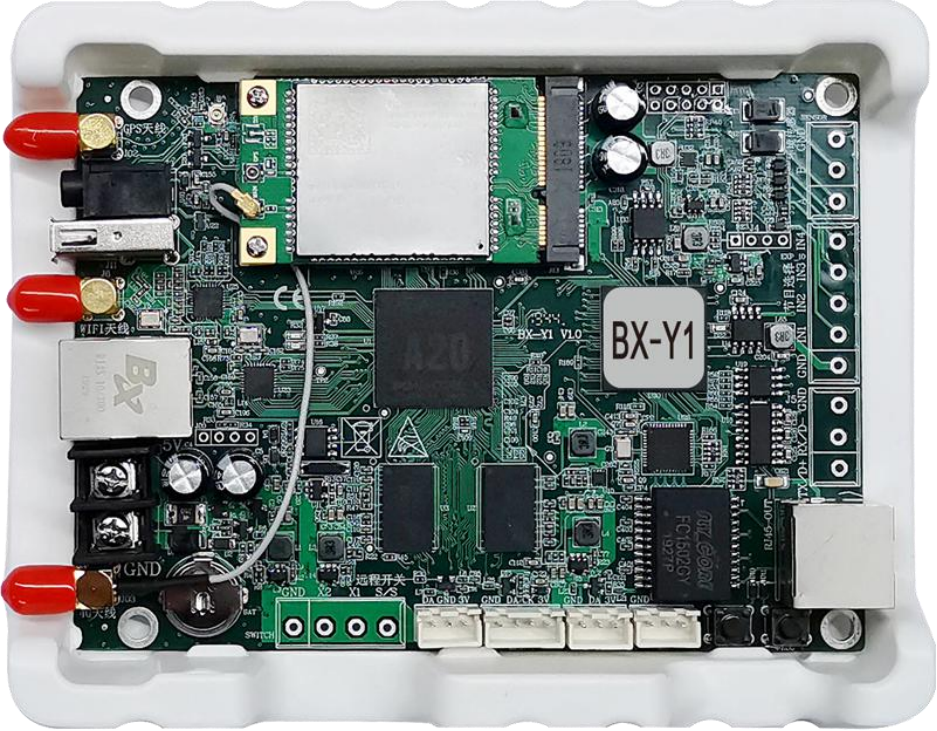
## **Brief Introduction**

Thanks for ordering LED control card. The design of the control card is according to the international and industrial standard, but if the operations are incorrect, it will probably bring you personal injury and financial harm. As to avoid these and win more from your equipment, please obey the specifications of this file.

## **About Software**

Cannot do any modification, decompilation, disassembling, decoding or reverse engineering on our software, it's illegal.

Product photos



## **Characteristics**

- ◆ High performance CPU, hardware decoding, HD video playback smoothly
- ◆ On-board 100M Ethernet port, audio port, Support USB port Wi-Fi module and will support 4G router .
- ◆ Support cluster control, especially suitable for large-scale urban outdoor advertising screen
- ◆ Large-scale deployment, management
- ◆ Abundant 3D stunt and Flash subtitle
- ◆ Support U disk display directly, also support importing display.
- ◆ Support Groups cluster management
- ◆ Support firmware update online.
- ◆ Support database, Very suitable for high-speed rail, hospitals, banks and other occasions of information release.
- ◆ Sensor: will support temperature sensor / temperature & humidity sensor / noise sensor / air quality sensor / wind speed & wind direction sensor / brightness sensor in the near future

## Guiding

### Safety Notes

- ◆ Input voltage is 5V, voltage range is from 3.3V-6V, please make sure the quality of the power supply of BX-Y series.
- ◆ Please make sure that all the power supply cables are plugged off when you want to connect or plug off any signal or controlling cables.
- ◆ Please make sure that all the power supply cables and signal cables are plugged off when you need to put in or take off the hardware equipment.
- ◆ Please make sure the environment is clean, dry and ventilated when you use this product, also, do not put this product to a high temperature and wet environment.
- ◆ This product is electronic products, please keep away from fire, water source and flammable&combustible products.
- ◆ There's high pressure components in this products, please do not open the box and repair it by yourself.
- ◆ Turn off the power supply immediately when you find smoking, peculiar smell or something unusual. And contact with us soon.

## **Function instruction**

### **Control area**

BX-Y1 has one Ethernet port which can support 1000 Mps ,Total 600K pixels, the maximum width 8192, the maximum height 2048.,used for medium size full color screen and cluster control.Widely used in Led posters and Led pole screens bus screens etc

### **Support high refresh**

BX-Y series of controller support high refresh(here refers to the receiving card for LED screen refresh, users scan)or mobile phone camera shooting picture from time to time, no distortion, no scanning line, the true nature and excellent results.

### **Multiple communication mode**

The controller is on board a 100M network interface, internal integrated 4G wireless module, WIFI module, also supports USB interface, external WIFI module. Built-in WIFI both as a hot spot (AP), but also as a terminal. Supports external 4G routers.

For the general network topology, users can use the network cable directly access the router or switch, and management PC communication.

For short-range wireless applications, the user can open the controller built-in WIFI, access to their own routers, to achieve online control management. Users can also open the controller's WIFI hot spots, access to their own PC controller, to achieve

management control. For the controller hot spots, the user can set the password, the rights management.

## **Multiple communication mode**

It has different type of control platform, including PC software LedshowYQ, iLEDCloud platform , iLEDsys system.LedshowYQ is used on PC , it can support windows XP, win7, win10 and other mainstream operating system. The software provides a comprehensive, rich controller configuration, programming, program release function. iLEDCloud platform is a online multimedia information publishing platform, its core server pinned on the Alibaba cloud, providing excellent reliability and stability. Users only need the browser to use the platform, you can remotely edit program, preview the program, scheduled fixed-point playback. Users can log in via phone, pad and pc. iLEDsys system is a high-end customers from the deployment of cloud platform, the platform will run on the user's own computer above, to achieve a more secure, stable and efficient management.

## **Large storage capacity**

BX-Y1 provides high-capacity built-in flash memory, also supports external capacity expansion. It was built-in 4G flash memory, users can store 8 hours of high-definition video.it provide SD card slot, allowing users to insert large capacity SD card, to expand capacity

## **Abundant 3D stunt**

Support graphic text, subtitles, video, lunar calendar, dial, timing, temperature,



humidity, announcements, weather forecasts areas. Text areas can be pictures or text, supporting a wealth of special effects, including curtain, pan, laser, mosaic, shutter and other common effects. Controller built-in GPU (graphics processing unit), support Abundant 3D stunt and FLASH subtitle.

### **Support database**

The controller will support database area, supports multi-page display, supports MYSQL, SQL server and other format database in the near future.

### **Support Android app**

BX-Y1 will support Android APP LedshowYQ soon. add,edit and send program, very easy to operate. The APP support search screen, support multi language, support dynamic preview, video trans-coding function. Support gesture zoom in and out of partition function.

### **Flexible program release methods**

Users can use PC software LedshowYQ to add ,edit , preview, release. If network is not convenient, users can also use U-disk to import programs or plug-in and display .USB transmit distance is  $\leq 3M$ , It can be reach 10 M with a extension line.

### **Online update firmware**

BX-Y series support remote upgrade firmware, users can use PC software LedshowYQ, iLEDCloud platform to upgrade the latest firmware, to enhance controller functionality, performance, solve bugs. The controller has built-in logging function, it can record various important events, and support remote consult, analyze and solve the fault.

## **Support many sensors**

Match with VMF multi-function card.BX-Y series can support many kinds of sensors . will support temperature sensor/ temperature&humidity sensor /noise sensor /air quality sensor /wind speed &wind direction sensor /brightness sensor in the near future.

## **Support remote control**

BX-Y1supports remote control , very easy to switch programs by the remote .and also the screen brightness,volume,turn on and off screen ,testing etc.user experience comparable to TV remote control, especially suitable for indoor led screen management.

## **Timer switch screen**

The LedshowYQ software support timing switch screen. After setting the turn on and turn off time, the computer will turn on the machine on time and automatically. It can make use of manpower and material resources reasonably, and greatly improve the service life and reliability of the display screen. When the user is inconvenient to operate on the side of the computer, this function can better realize no one. The 67 function of duty.

## **Relay function**

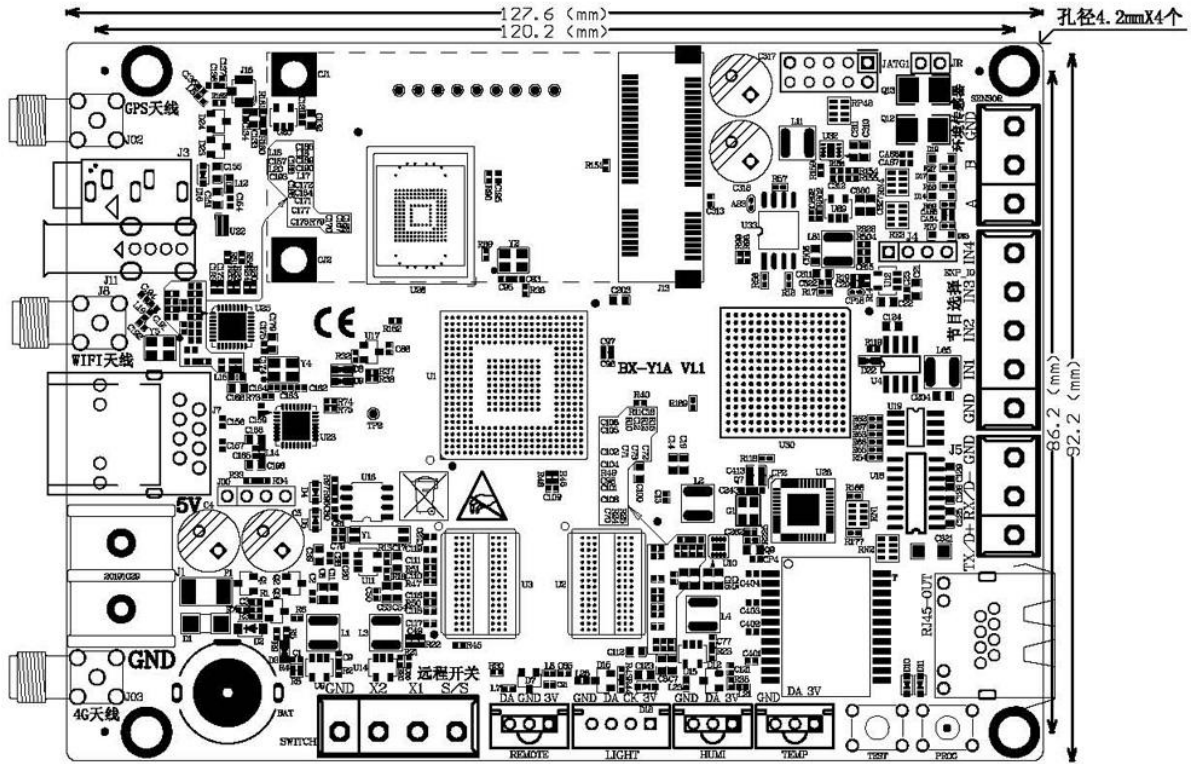
In the near future ,BX-Y series will add relay function ,Match with VMF multi-function card,the controller supports remote start, shutdown control , effectively reduce the screen power consumption, saving energy.

## Technical specifications

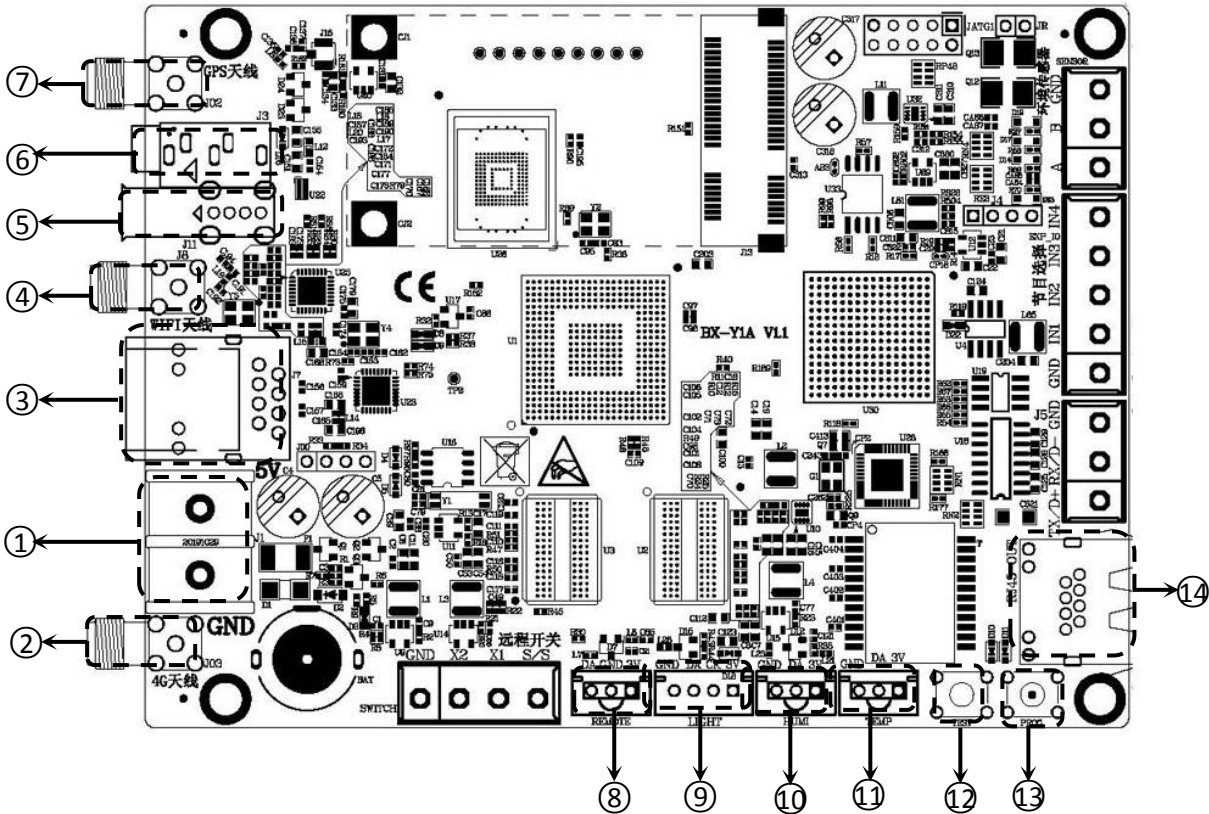
<b>Screen index</b>	
Parameter	Specification
Minimum size	64 × 64
Maximum size	1024×600
Maximum width	8192
Maximum height	2048

<b>Product specification</b>	
Input power supply	5V ( 3.3V ~ 6V broad operation voltage )
Power Dissipation	≤10W
Temperature	-40°C ~ 80°C

## Dimension diagram



## Interface diagram



Key instruction		
1	5V	5V5V Power interface, DC voltage input, rated voltage 5V, support(3.3V ~ 6V )
2	antenna	Connect 4G antenna
3	100M	Ethernet interface, Fast Ethernet, connected to the computer
4	antenna	Connect 2.4GHz WIFI antenna
5	USB	USB port, Connect with USB disk, external WIFI module
6	AUDIO	Audio output port
7	antenna	Connect GPS antenna
8	IR	IR controller interface
9	LIGHT	Brightness sensor interface
10	HUMI	HUMI/TEMP sensor interface
11	TEMP	TEMP sensor interface



12	TEST	Test button
13	PROG	Program switch button
14	LAN OUT	Scan data output port , connect with full color receiving card

## Contact Us

### Shanghai ONBON Technology Co.,Ltd (Headquarters)

Address: 7 Floor, Tower 88, 1199#, North Qinzhou Road, Xuhui District, Shanghai City, China

Tel Phone: 086-21-64955136

Fax: 086-21-64955136

Website: [www.onbonbx.com](http://www.onbonbx.com)

### ONBON (Jiangsu) Optoelectronic Industrial Co.,LTD

Address: 1299#, Fuchun Jiang Road, Kunshan City, Jiangsu Province, China

### Sales Contacts

Tel: 0086-15921814956 0086-15800379719

Email: [onbon@onbonbx.com](mailto:onbon@onbonbx.com)

### Second Development

Tel: 0512-66589212

Email: [dev@onbonbx.com](mailto:dev@onbonbx.com)

### iLEDCloud

Website: <http://www.iledcloud.com/>



Public Wechat



ONBON APP

